

## **ALBA GRADUATE BUSINESS SCHOOL**

### **Address**

6-8, Xenias street (close to American Embassy at Vas. Sofias Ave.), downtown Athens, Greece

### **Telephone**

+302108964531

**URL:** <http://www.alba.acg.edu>

<http://www.alba.acg.edu/studying-at-alba/international-students/>

### **Contact persons for incoming students:**

Zoe Kourounakou, [ZKourounakou@alba.acg.edu](mailto:ZKourounakou@alba.acg.edu)

Anna Vithoulka, [AVithoulka@alba.acg.edu](mailto:AVithoulka@alba.acg.edu)

### **Academic Programs for exchange students:**

The ALBA MBA, MBA in Shipping, MSc in Finance, MSc in Strategic Human Resources Management, MSc in International Business & Management, MSc in Marketing, MSc in Business for Lawyers, MSc in Shipping Management, MSc in Risk Management, MSc in Entrepreneurship, MSc in Tourism Management, Double Degree MSc in Supply Chain Management.



### **Programs curricula and ECTS per course:**

Please click on the program for the web site link

[The ALBA MBA](#)

[MBA in Shipping](#)

[MSc in Shipping Management](#)

[MSc in Finance](#)

[MSc in Strategic HRM](#)

[MSc in International Business & Management](#)

[MSc in Business for Lawyers](#)

[MSc in Risk Management](#)

[MSc in Marketing](#)

[MSc in Entrepreneurship](#)

[MSc in Tourism Management](#)

[Double Degree MSc in Supply Chain Management](#)

In each web page you may find in details the program courses, the class hours and the ALBA credits (1 ALBA credit = 3 ECTS).



### **Semesters**

Programs are taught in 2 month periods (mid September- mid November, mid November – mid January, mid January- mid March, mid March – mid May, mid May- mid July). Classes start the second week of the first month of the period and they finish the second week of the 3<sup>rd</sup> month. Detailed time schedule will be announced when students are accepted for the program. Students may collect 18 ECTS each period in every program. Students may choose to participate in a short course instead of a whole period (4 days to 1 month). They can also combine courses between programs if they don't overlap in time schedule.

### **Language of courses**

All courses are taught in English.

### **Deadlines for applications**

Students may apply three months prior to any period (for longer visits) and two months prior to any short course.

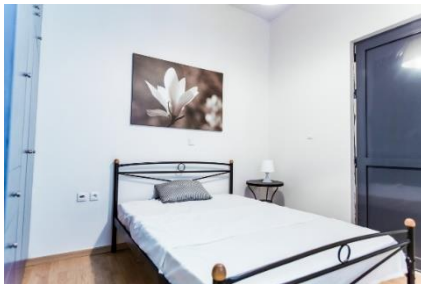
## Minimum Requirements

Students need to be at graduate level. If the students want to participate at any of the MBA courses, then they need to have at least 3 years of working experience. They also need to have good knowledge of English language, TOEFL min 100 or IELTS min 7,0.

## Visa

Non EU students, for visits of more than 3 months, require student visa. A certain procedure needs to be followed with Greek Embassies. We need at least 2 months before arrival to make arrangements.

## Accommodation



For longer visits and according to availability, ALBA may provide furnished apartments upon request (approx. 350 - 450 Euro/bills included). In that case students may have to share an apartment with other international students.

## Other Accommodation options in Athens

### Hostels

1. [www.athensstudios.gr](http://www.athensstudios.gr) (recommended)
2. <http://www.citycircus.gr/>

### Furnished Apartments

3. <http://www.delice.gr/>
4. [www.athensfurnishedapartments.gr](http://www.athensfurnishedapartments.gr)

### Airbnb options

5. <https://www.airbnb.gr/rooms/21101583>
6. [https://www.airbnb.com/rooms/25725342?preview\\_for\\_ml](https://www.airbnb.com/rooms/25725342?preview_for_ml)
7. [https://www.airbnb.com/rooms/24525954?preview\\_for\\_ml](https://www.airbnb.com/rooms/24525954?preview_for_ml)
8. [https://www.airbnb.com/rooms/24590845?preview\\_for\\_ml](https://www.airbnb.com/rooms/24590845?preview_for_ml)
9. [https://www.airbnb.com/rooms/24522641?preview\\_for\\_ml](https://www.airbnb.com/rooms/24522641?preview_for_ml)
10. <https://athens-center-cozy-apartments.business.site/?m=true>